

NorthWestern Energy Hydro Lands Policy

Purpose – This Policy explains the scope, rules and regulations relating to public use of NorthWestern Energy’s (NorthWestern) lands along the rivers and reservoirs associated with NorthWestern’s Hydroelectric Projects, including Hebgen, Madison, Hauser, Holter, Black Eagle, Rainbow, Ryan, Cochrane and Morony dams on the Madison and Missouri Rivers; and Thompson Falls dam on the Clark Fork River (the Hydro Facilities).

Applicability – This Policy applies only to lands owned by NorthWestern along the rivers and reservoirs adjoining the Hydro Facilities. This Policy does NOT apply to any public lands (such as land owned by the State of Montana, Bureau of Land Management or Forest Service); private lands not owned by NorthWestern Energy; or other lands or easements owned by NorthWestern, not adjoining the Hydro Facilities (such as NorthWestern’s power line and gas line easements). It is your responsibility to determine whose land you are using.

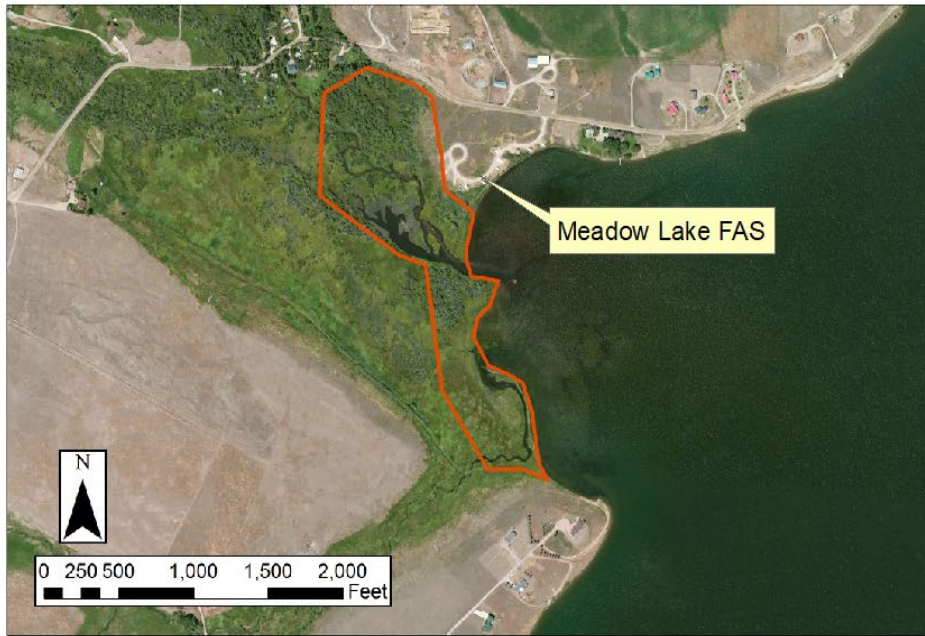
General Policy – Lands owned by NorthWestern, adjoining its Hydro Facilities are open and available for public use, under the conditions noted below, unless noted by specific signage, fencing or otherwise noted.

- Non-motorized pedestrian or bicycle use only.
- Day use only (sunrise to sunset).
- Overnight Camping is prohibited.
- Firearms, hunting and trapping are prohibited, except as noted below.
- Fires and fireworks are prohibited.
- Commercial use is prohibited.
- Natural features and vegetation must be preserved.
- Firewood cutting is prohibited.
- Trail building is prohibited.
- Physical structures and Improvements are prohibited, unless expressly permitted.
- Littering is prohibited (Pack it in and Pack it out).

Hunting and Trapping – Hunting is only permitted near Ennis Lake, Lake Helena, the “North Shore” of the Missouri River downstream of Great Falls and the Widow Coulee Fishing Access Site, as is depicted on the attached Hunting Access and Rules maps. The “North Shore” hunting rules may change on an annual basis, so contact the Montana Fish, Wildlife and Parks (MFWP) office in Great Falls for the most current version.

Trapping is only allowed on the portion of NorthWestern’s lands that are managed by MFWP as part of the Lake Helena Wildlife Management Area (WMA) according to the trapping-related rules for this WMA. NorthWestern has given permission for MFWP Wardens and law enforcement to enforce applicable laws on these and other NorthWestern lands.

Hazards – Hazards may exist on these lands. Any person using NorthWestern’s lands, adjoining its Hydro Facilities assumes the risk of injury arising from their use and without any assurance from NorthWestern that the lands are safe.



Ennis Lake Hunting Access and Rules on NorthWestern Energy Lands

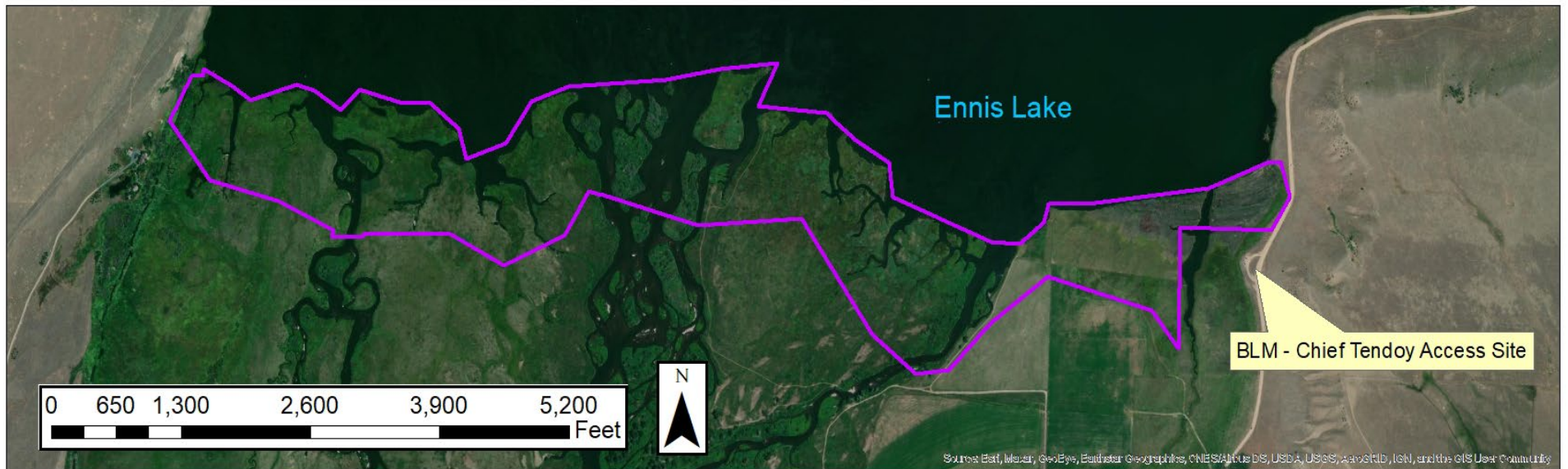
Hunting Access and Rules

Hunting Rules

Status

- Archery and Shotgun (No Slug) Only
- Archery, Shotgun and Muzzleloader Only

All boundaries may not be marked or fenced.
You are responsible for knowing where you are.



Lake Helena Hunting Access and Rules
on NorthWestern Energy Lands



